

# PARABLE OF THE LOST SHEEP

Matthew 18: 12-14

1. The Parable of the Lost Sheep teaches us that everyone is important to God. What are some ways that we can show God that He is important to us?

**Multi-Sensory Idea:** Go for a prayer walk around the room and spend time with God.

**Prompts for Deeper Discussion:** In the story, the shepherd wanted the sheep to stay close to him. God wants each of us to stay close to Him too. What are some ways that we can grow in our faith and have a close relationship with God?

2. Jesus taught us that everyone is important to God- even little children. Can you think of people that you know that God loves very much? What makes those people special? (Hint- don't forget to include yourself on the list- God loves you very much!)

**Multi-Sensory Idea:** Draw a picture for someone to remind them that God loves them very much. Spend some time thinking about what makes them extra special.

**Prompts for Deeper Discussion:** We know that God believes that everyone is important. How do you think God wants us to treat other people? What does the Bible say about this? (Hint - Read Matthew 7:12)

3. In the story, when the shepherd found his lost sheep he was VERY happy. How do you think God feels when we stay close to him?

**Multi-Sensory Idea:** Show what feeling happy looks like by making a happy face or acting it out.

**Prompt for Deeper Discussion:** God loves us very much, and it makes Him happy when we come to Him in prayer. Invite students to join in prayer right now. Bow your head and clasp your hands. **Then say:**

*Heavenly Father,  
Thank you for this day that You have given us. Thank You for loving us and for showing us that everyone is important to You. Help us to remember to come to You in prayer. Please help us to always follow You. In Jesus's name, we pray. Amen.*

**Today's Takeaway: Everyone is important to God!**

# PARABLE OF THE LOST SHEEP

Matthew 18: 12-14

**Instructions:** Read the questions, then ask (or assist) the student to point to the correct answer.

1. In the Parable of the Lost Sheep, who do we learn is most important to God?



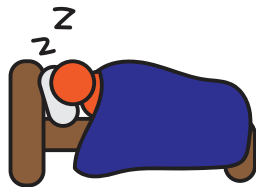
A Few People

OR



Everyone

2. What did the shepherd do when he lost his sheep?



Take a Nap

OR



Look for It

3. You are loved by God and so important to Him. God wants you to stay close to Him. What can you do this week to stay close to God?



Pray



Read the  
Bible



Praise Him  
through Music



Go to Church

# PARABLE OF THE LOST SHEEP

Matthew 18: 12-14

**Instructions:** Lead the student into prayer. Invite them to point to who they would like to pray for.

**Say:** God loves us and hears our prayers. It makes God happy when we pray to Him because He loves us so much and He wants us to stay close to Him. Would you like to pray with us? Close your eyes and bow your head.

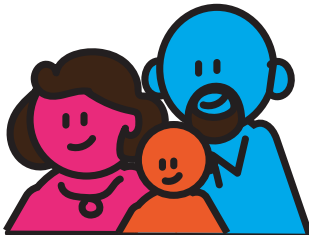
**Prompt:** Ask the student if he/she would like to point to what they would like to pray for today from the visuals below. Then read the prayer below and add in the requests. (For more options, please use the WW Prayer Prompt Board)

Heavenly Father,

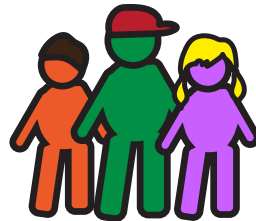
Thank you for this day that You have given us. Thank You for loving us no matter what. Help us to remember to come to you in prayer. Please be with my \_\_\_\_\_ today. Thank you that we can always come to You.

In Jesus's name, we pray. Amen.

PLEASE BE WITH MY:



Family



Friends



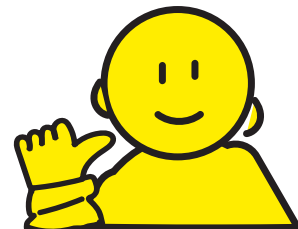
Teacher



Pastor



Team



Me

Today's Takeaway: Everyone is important to God!